

Annual Report 2009-10

Building Communities



VISION

To inspire and enable accessible philanthropy to build healthy resilient communities and positive social change.

MISSION

A trusted and vibrant organisation which generates & distributes philanthropic resources to match donor interests to emerging social issues and needs of communities.

PRINCIPLES

Tolerance

Integrity

Independence

Commitment to social, economic and environmental justice

Equity

Leadership

Authoritative



Contents

CEO'S MESSAGE – CONTINUED GROWTH IN 2009-10	2
FROM THE CHAIR	3
THE BUILDING BLOCKS – 1. FOUNDATION GOVERNANCE	4
MCF - 'BIG AND BURLY'	7
THE BUILDING BLOCKS – 2. STRUCTURE, PRODUCTS AND SERVICES	8
MCF SUB-FUNDS AND GUMNUT ACCOUNTS	10
BUILDING CHAMPIONS WITH PROFESSIONAL ADVISERS	15
MCF – BUILDING AND ENERGISING A COMMUNITY OF PHILANTHROPISTS	16
GRANTMAKING – GOING FROM STRENGTH TO STRENGTH	17
MCF GRANTS 2009-10	18
MACROMELBOURNE IN 2010	27
MCF'S COMMUNITY OF DONORS	28
FINANCIAL REPORT	30
ABRIDGED FINANCIALS AS AT 30 JUNE 2010	34
THANKS	40

CEO's Message

Continued growth in 2009-10



Sarah speaking at MarcoMelbourne launch

It is with much pleasure that Melbourne Community Foundation (MCF) presents its Annual Report for 2009-10. In introducing it I'd like to quickly touch on the following highlights: the diversity, extent and impact of the grantmaking activity; the growth of the Foundation's community of donors; and the MacroMelbourne initiative, a tangible demonstration of MCF's role as a leader and partner in developing community philanthropy more broadly.

Melbourne Community Foundation's grants, on behalf of its donors, once again exceeded all previous annual granting records, with more than \$2.9 million distributed to over 200 organisations. Details of all the grants are included in the body of this report.

What is especially noteworthy about the annual grants analysis is the breadth and extent of grant-making interest and commitment from the donors. One of the most distinctive features of MCF is that it supports donors to develop and implement their giving in whatever their areas of interest.

Some donors have very clear interests and know exactly what they would like to do, others have a broad area of interest and want to find grant opportunities to match them, while others want to explore lots of options. As such, an analysis of the 335 grants made over the year covers the full spectrum, from small to large, one-off to multi-year funding, with the gamut of donor interests represented, including arts and culture, medical research, education, environment, disability, and welfare.

In addition, the type of activities funded spans everything from supporting recurrent costs, to funding specific programs and events, meeting immediate need, investing in social enterprise, funding research, and supporting individuals, organisations and whole communities. It is the most extraordinarily diverse grants program, which simply reflects Melbourne Community Foundation's core role – to make philanthropy accessible and support donors to develop and implement their charitable giving.

During the year MCF welcomed 18 new donor funds and eight new Gumnut accounts (individuals, families, non-profit organisations and businesses offering workplace giving programs through Melbourne Community Foundation). What is interesting is that in the survey of donor interests and satisfaction, most said that they chose Melbourne Community Foundation for ease of administration – MCF simplified the philanthropic task and gave them access to people with similar interests. Feedback from this survey informed the most recent series of events and workshops for donors, focusing on current community issues and trends, as well as on effective philanthropy and grantmaking.

Melbourne Community Foundation's contribution as a leader in community philanthropy was soundly demonstrated with the launch of the second MacroMelbourne research report which presented data and evidence of the issues affecting the urban growth corridors of Melbourne, a highly pertinent and current contribution to Melbourne's broader population debate and discussion on what it takes to be a liveable city. The related MacroMelbourne project report offers donors opportunities to fund a variety of grass-root local projects, addressing the issues identified.

The unique capacity of community foundations to convene, connect and endow is where initiatives such as MacroMelbourne pay dividends. As apolitical, objective conveners, community foundations can bring together government, the private and non-profit sectors and other philanthropists in a way no one else can. Community foundations are also a mechanism to connect disparate parts of the community, building understanding, knowledge and engagement. As well as connecting donors to non-profit and community organisations, Melbourne Community Foundation connects donors with each other, enabling them to collaborate, leverage their giving with others with similar interests to create effective and rewarding networks.

Endowment is a key feature of community foundations – endowing the community with a permanent source of charitable funds, as well as with engagement and leadership. But the real test is how these funds are then used. It can be hard to give money away well, and it can be even harder to do it on your own. The track record of Melbourne Community Foundation's grantmaking speaks for itself.

I hope you enjoy reading this report. My thanks to all MCF's donors, partners, the Board, committee members and colleagues for your passion, vision and commitment – long may it continue!

A handwritten signature in black ink, appearing to read 'Sarah Davies'.

Sarah Davies

I said in my report last year that MCF needs to continue to grow in order to be truly effective in and responsive to the community. In this context, it is very pleasing to report that the corpus of funds increased in the financial year by 5% to \$31.5 million – a strong result given the record grants during the year.

These assets enabled MCF in the last financial year to:

- undertake a comprehensive survey of its donors to establish their interests and identify appropriate granting opportunities;
- make 335 grants totalling more than \$2.9 million to over 200 organisations (all records for MCF);
- welcome 18 new donor funds and eight new Gumnut accounts;
- undertake, through the McCaughey Centre, a second MacroMelbourne report identifying areas of need in outer Melbourne; and
- facilitate a number of donors to fund, often in conjunction with other MCF donors, specific projects identified by the MacroMelbourne report.

All these activities go to achieving MCF's mission to make philanthropy accessible to large and small donors and to assist them to help where they believe help is needed.

Unlike some other foundations, MCF does not have the benefit of significant endowment to cover administrative costs. As a result, its expenditure slightly exceeded its income in the financial year. The shortfall was met from retained earnings, prudently accumulated over the Foundation's life.

As the level of granting grows, so does MCF's need to improve its systems. The balanced budget that the Board has approved for 2010-11 allows MCF to invest in its systems to cater for the ever increasing number of grants, while at the same time maintaining its high level of service and interaction with its donors.

It goes, or should go, without saying that the Board is deeply appreciative of the huge efforts of Sarah, Andrea, Trudy, Leonie and Monica throughout the financial year. They could not be reasonably expected to do more than they do for MCF and, particularly, its donors.

During the year, Peter Griffin and Bernard Marin stood down from the Board. Peter was a long standing and very active Board member whose insightful suggestions and work on the Finance Committee has been and will continue to be missed. With the appointment of Marin Accountants as MCF's accountant, both Bernard and the Board felt that it would be prudent for him to step down to avoid any perception of any conflict of interest. I would like to thank Bernard for his contribution while he was on the Board and as a member of the Professional Advisers Committee.

Also during the year, Jodie Baker requested and the Board approved a long term leave of absence. Jodie is a real dynamo and I look forward to her rejoining the Board when she returns from the United States.

During the year MCF was fortunate to have Elana Rubin, Tim James and David Murray join the Board. Elana contributes a wealth of investment, management and governance experience and is never short of an idea. Tim, who has been a major contributor on the Professional Advisers Committee, adds great depth to MCF's investment expertise. David brings with him deep knowledge of the community sector and is a very welcome addition to the Grants Committee.

Finally, I would like to thank the Board for its support throughout the year. Its members are from diverse backgrounds and MCF is fortunate to have access to their range of skills and experience. I am particularly fortunate to have the benefit of their collegiality and commitment.

From the Chair



I am always amazed at how much Melbourne Community Foundation achieves in a year.

It is not a large organisation and it operates on a tight budget. But it is blessed with a really talented and dedicated management team, supported by an active and committed Board.

A handwritten signature in black ink, appearing to read 'Chris Lovell', written in a cursive style.

Chris Lovell

The building blocks

1. Foundation Governance

Community Foundation Network Ltd acts as Trustee for the Melbourne Community Foundation. The Trustee has a Board of Directors. The directors bring expertise in a range of fields, including business and financial management, and law and community development. Board members volunteer their time to oversee the functions of MCF and contribute financially to its operations. A number of the directors and their families also have sub-funds. Each director is also a member of at least one MCF sub-committee.

The Board's operation and performance is externally reviewed every two years. In addition, the Board holds an annual retreat to discuss ongoing strategic direction and current issues affecting the growth of the foundation.

Board of Directors



Chris Lovell (Chair) LLB, BA, LLM
National Managing Partner, Holding Redlich. Director, Clemenger Group Ltd and Victorian Railtrack Authority. Trustee, Melbourne Cricket Ground Trust
Appointed 2005. Chair 2009



Jodie Baker LLB (Hons), BA, GradDipAppFin
Research Analyst, Evans & Partners Pty Ltd
Appointed 2009. April 2010 Leave of Absence



Sandra de Wolf AM BA (Hons), DipSocStud, MSW, FAIM, FAICD, AASW
CEO, Berry Street. Chair, Families Australia. Director, Greatconnections, Child and Family Welfare Association of Australia
Appointed 2008



Annie V Duncan PhD
Managing Director, Shipley Consultants. Director, Scope (Victoria)
Appointed 2006



Peter Griffin AM BCom
Director, Rothschild Australia Ltd, Global Mining Investments Ltd, Murdoch Children's Research Institute and Victorian Breast Cancer Research Consortium Inc. President, Cancer Council Victoria
Appointed 2004. Retired 2009



Jo Grigg BA
President, Friends of the Elms Inc
Appointed 2007



Peter Hero BA, MA, MBA (USA)
Vice President Development and Institute Relations, California Institute of Technology. Director, Sesame Workshop, New York, Skol Foundation Palo Alto, Thrive Research Los Altos
Appointed 2007



Tim James BBus, DipFinPlan, CFP
Executive Director, UBS. Director, Hanover Welfare Services
Appointed 2009



Greg Larsen BCA, FCPA
Principal, The Adelante Group. Member, VicRoads Audit Committee
Appointed 2005



Karen Mahlab BEcon
Director and CEO, Pro Bono Australia and Mahlab Group. Trustee, National Council of Jewish Women Foundation (Vic) and Jewish Aid Australia
Appointed 2001

Patron

The Patron of Melbourne Community Foundation is Professor David de Kretser AC, Governor of Victoria.

Sub Committees

Since MCF was established in 1997, the Board has always taken an active role. The sub-committees also contain external members who play a vital role with the extensive expertise and experience. MCF currently has seven sub-committees:



Ian McHutchison OAM LLB, FCIS
Director and CEO, Adult Multicultural Education Services. Director, Urban Communities Ltd
Appointed 2006



David Murray BA, DipCrim, MA
Executive Director, Youth Substance Abuse Service.
Member: Minister's Advisory Committee on Mental Health, Victorian Drug and Alcohol Prevention Council, Victorian Children's Council, Juvenile Justice Roundtable and Youth Parole Board, Victorian Alcohol and Drug Association
Appointed 2009



His Honour Judge David Parsons
SC LLB (Hons)
Judge of the County Court of Victoria. Director, Koorie Heritage Trust and Australian Community Support Organisation. Member, Law Council of Australia Indigenous Affairs, Aboriginal Leadership Committee, Judicial Officers' Cultural Awareness Committee
Appointed 1997



Elana Rubin BA (Hons), MA, FFin, FAICD, FAIM, FAIST
Non-Executive Director, Australian Super. Chair, Victorian WorkCover Authority (WorkSafe), AustralianSuper. Director, Industry Superannuation Property Trust, Tower Australia Pty Ltd, Transport Accident Commission and SecondBite
Appointed 2009



Marion Webster OAM, BA DipSocStud, Senior Fellow City University of New York.
National Chair, Fitted for Work Ltd. Trustee/Director, Manukau Community Foundation (NZ). Vice Chair, Changemakers Australia. Patron, Education Foundation Australia. Trustee, Philip and Vivien Brass Foundation
Appointed 1997, Chair 2005-2009

Casey J Tan BComm, MMgt, FCA, FAIM, FIPA, FAICD PHF
Director, CITIConsulting Pty Ltd and Entitlements Consultancy Sdn Bhd, MoneyScout Pty Ltd
Appointed 2007

Governance Committee

His Honour David Parsons (Chair)
Annie Duncan
Chris Lovell
Marion Webster

Audit Committee

Hugh Parkes (Chair)
Chris Arnold
Hayden Raysmith
Casey Tan

Nominations Committee

Chris Lovell (Chair)
Chairs of sub-committees

Finance and Investment Committee

Ian McHutchison (Chair)
Jodie Baker
Sue Dahn (Pitcher Partners)
Michael Gilmore (IPAC Securities)
Peter Griffin
Tim James
George Krithis (DFS Advisory Services)
Elana Rubin
Casey Tan

Communications Committee

Annie Duncan (Chair)
Jo Grigg
Chris Lovell
Marion Webster

Professional Advisers Committee

Greg Larsen (Chair)
Sue Dahn
David Gibbs
Ian Granter
Heather Gray
Sarah Robinson
Stuart Rose
Andrea Watson
Carl Walsh

Grants Committee

Karen Mahlab (Chair)
Jo Grigg
David Imber
David Murray
Sandra de Wolf
Trudy Wyse
Jill Reichstein

Ambassadors

In 2005 MCF appointed its first Ambassadors. Ambassadors are chosen for their high standing in the community and their knowledge of MCF so they can assist to raise the Foundation's profile. MCF's Ambassadors include:

Michael Andrew
Chris Arnold
Concetta Benn AM
Clare Cannon
Reverend Tim Costello AO
Carol desCognets

David I Gibbs
Peter Griffin AM
Janine Kirk AM
Ellen Koshland
Louise Myer
Elizabeth Proust

Hayden Raysmith
Jill Riechstein OAM
David Scott AO
Fiona Smith

Staff



Sarah Davies, Chief Executive Officer
Andrea Heffernan, General Manager
Trudy Wyse, Manager Community and Donor Services
Leonie Mugavin, Grants Officer
Julie Delaney, Administration Officer (July-December 2009)
Monica Harvey, Administration Officer (January-August 2010)

Professional Services

Legal	Freehills and Holding Redlich (both pro bono)
Audit	KPMG
Investment Manager	Beulah Capital Pty Ltd
Accountant	Marin Accountants

Every organisation must engage in continual renewal and, having had the privilege of being a Board member for almost a decade, it is time for me to make room for new energy.

But what a wonderful decade it's been. When I first joined the Board, in 2001, MCF had 34 sub funds and \$9.2 million under management. It has grown mightily, in tune with my children who were then 8 and 5. Now my sons are big burly boy-men and MCF is 'big and burly' too, with \$31.5 million under management, through 160 sub funds.

As we all know, while money is a measure of input, it is impact that counts most. Over the last decade, the face of philanthropy and the social sector has changed with the growth of community foundations, corporate social responsibility, social enterprise, community development financial Institutions, as well as the establishment of new philanthropic giving vehicles such as private ancillary funds, and an increasing recognition of the innovative role philanthropy plays in addressing social issues and supporting thriving communities. MCF has been instrumental in promoting as well as responding to this emerging mindset, by finding practical ways of inducing and supporting real social change.

As a Board member, I have had the privilege of working with passionate, intelligent and caring people, in growing MCF and pursuing its mission. It has also, often, been a great deal of fun! I wish to thank all those people, and the Foundation, knowing that I have gained more than I have given.

As the inaugural Chair of MCF's MacroMelbourne initiative, I was privileged to be on the ground floor of what is an Australian first. MacroMelbourne brings business, community, academic, philanthropic and government sectors together to identify projects for funding that strategically tackle Melbourne's emerging issues – particularly issues around disadvantage. Thus far, over \$1.5 million dollars has been invested into projects with excellent outcomes. The MacroMelbourne model has now been taken up in other Australian states and in New Zealand.

As a donor – a role I will most certainly maintain – my family and I have focused on refugees and the issues they face. The name of our family sub-fund is the Omi-Albers Fund, set up in memory of our grandmother (whom we called Omi) and her father Arthur Albers. We prioritise refugees because the funds came from war reparations coughed up by the Swiss banks after 60 years of huge international pressure to repatriate 35,000 dormant account holders and their families after the Second World War. The ongoing advice from MCF – about what dynamic refugee projects are out there, the opportunity to collaborate with other MCF donors, and the excellent work of people in the projects – have all been instrumental in yielding the worthwhile impacts we have achieved through our giving.

The last decade has been replete with struggle, much growth, significant achievements and high overall impact. I have every confidence that MCF will continue to track onwards and upwards, with its strategic board, dynamic executive team, and the increasing awareness of the foundational role that philanthropy and the social sector plays in making our lives worth living, and worthy of having been lived.

Karen Mahlab
Founder Pro Bono Australia/Social Citizen

MCF 'Big and Burly'



Karen launching MacroMelbourne research and project booklet in December 2009

The building blocks

2. Structure, Products and Services

Melbourne Community Foundation (MCF) provides one of the best and easiest ways of establishing a perpetual source of giving. MCF gives donors access to a network of likeminded people and extensive grantmaking skills. Donors have the opportunity to experience the rewards of giving during their lifetime or to leave a lasting legacy – or both.

Each year MCF’s reputation as a leading, experienced community foundation grows. The products and services that allow donors to carry out their philanthropic activities is increasing and diversifying in response to the level of sophistication of donors and their needs for flexible giving vehicles.

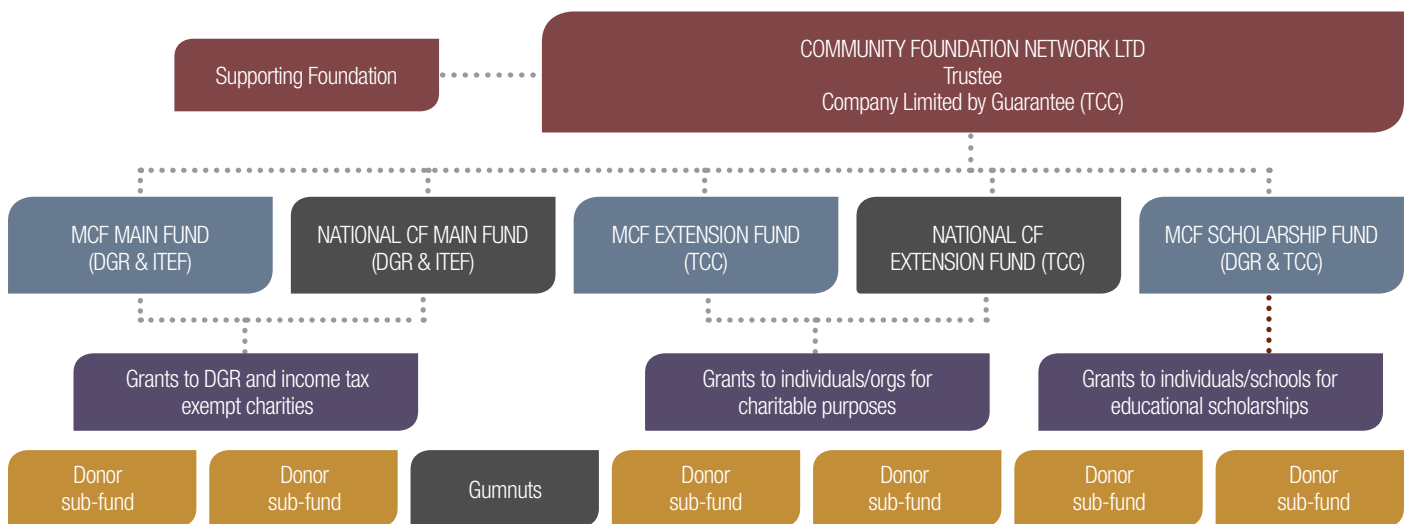
Over the years, MCF has evolved as a community foundation that not only serves its geographical base of Greater Melbourne but also has grown its capacity to provide donor services Australia wide.

MCF offers individuals, families, groups, corporations and not-for-profit organisations an easy and satisfying way of giving something of real value back to the communities that they care about.

Each donor has different aspirations and objectives for their philanthropic fund and charitable giving. Most donors have a long term view or wish perpetual value from their donations. Their donation capacity and grantmaking intentions vary either during their lifetime or through a bequest.

MCF’s corporate donors also have diverse needs. Companies want to establish an endowment fund that will continue to grow and they also want to engage their staff in workplace giving programs so they can use these donations to give back into the community through grants in a short time frame.

Melbourne Community Foundation has a range of products and services to make philanthropy accessible and effective for all donors. Each is designed to provide flexible, cost effective mechanisms for donors to carry out and increase the impact of their charitable giving.



MCF Sub-funds

With a minimum \$20,000 initial donation, donors can establish sub-funds under MCF's umbrella trust structure. Sub-funds can be named for a cause or after a donor. They can be established in any of the five trust funds, depending on whether a donor wants a tax deductible or a non tax deductible vehicle, a national product or a specific fund for educational scholarships. Sub-funds can be established in just 24 hours!

Gumnut Accounts

For as little as the cost of a coffee each day, MCF's Gumnut accounts are philanthropic savings accounts that donors can establish in any of the trust funds with regular \$2,000 a year minimum contributions. These donations are made via a direct debit facility and once the balance reaches \$20,000 funds can be transferred into a named sub-fund.

Supporting Foundations

A Supporting Foundation can be started with a minimum of \$1 million. Donors are not the trustee but a separate trust fund is established with its own objectives and investment asset allocation. Donors can name a supporting foundation either a 'foundation' or a 'trust'.

Corporate sub-funds and workplace giving

You don't need to have the resources of an ASX Top 100 company to start a sub-fund with MCF. Business and organisations can establish branded charitable sub-funds with as little as \$20,000. They can engage their employees in a workplace giving program where staff donations are contributed pre-tax. The MCF model allows a company to continue to do what it does best without the administrative burden and demand on resources, maximising the use of its philanthropic dollar. MCF assists companies achieve their charitable giving objectives. MCF works with businesses from the very beginning, assisting to establish the company's mission and value statements, providing guidelines for the operation of the fund and providing the expertise and knowledge to assist implement grantmaking programs. Read about the Holding Redlich Social Justice Fund on page 29.

Bequests – to a named Sub-fund and/or MCF's Community Fund

Donors can leave a bequest in their Will to an existing sub-fund, or create a sub-fund or donate to the MCF Community Fund. MCF can work with donors and their lawyers to create estate planning strategies that will preserve your charitable legacy beyond your lifetime.

Donations to the MCF Community Fund

Tax deductible donations can be made to the MCF Community Fund. All grants made from this fund are determined by the MCF Board and generally directed to MCF initiatives.

Philanthropic Advisory Services

MCF offers philanthropic advisory services for external donors who wish to access MCF's research and grantmaking expertise and support. See page 16 for more details.

MCF SUB-FUNDS AND GUMNUT ACCOUNTS

Despite the uncertainty in the financial markets continuing during the year MCF continued to welcome new donors to its community with the establishment of 18 sub-funds and eight Gumnut accounts.

Fund Name	Area of Interest
Abbotsford Convent Fund	Arts, cultural and charitable purposes.
Aboriginal Student Bursaries Fund	Indigenous student bursaries.
Agnes Robertson Fund	Aged care, medical research, the arts and education.
Alf And Meg Steel Fund	Health and medical related causes, especially for the aged. Children, both in Australia and overseas, gardening, the environment and Indigenous Australians.
Alice Sloan Fund	To provide financial and in-kind support, as well as encouragement to enable young people to participate in varied pursuits, including sport, dance, music, art and outdoor education.
Allaway Lancashire Fund	Support for social justice, ethical and environmental education, and protection of cultural and natural heritage.
Anna Wearne Fund	To create opportunities for young people to reach their potential, where such potential is hampered due to disadvantage. The objectives of the fund concern education, Indigenous people, leadership and women's rights.
Annamila Fund	General charitable purposes.
Antoinette Richardson Memorial Fund	Specific organisations, including Swinburne University, VCA, St Francis Choir.
APT Conservation and Charitable Fund	To support processes, events and activities that resolve problems to make a positive and measurable difference to selected causes.
Ardoch Future Fund	Making education a reality for young people, including those experiencing homelessness and disadvantage.
Assia Altman Fund	International development, animal welfare and protection, and social entrepreneurship.
Australian Disability and Indigenous Peoples' Education Fund (ADIPEF)	To support opportunities for lifelong learning for people with disabilities from indigenous and non-indigenous backgrounds, from pre-primary to post tertiary.
Australian Environment Grantmakers Network	Environmental issues Australia-wide.
Avalon Circle	Mental illness, disability (intellectual, physical, sensory) homelessness, drug and alcohol dependency, victims of abuse.
B B & A Miller Fund	Aboriginal education and health, disability, education, environment, medical research, mental health, youth suicide, drugs and addictions, disadvantage, developing countries and humanitarian crises.
Baird Family Fund	Meeting the needs of the intellectually disabled and their families.
Baker Watson Fund	Sane Australia, guide dogs and homelessness.
Ballandry Fund	General charitable purposes.
Beach-Harding Fund	General charitable purposes.
Bell Family Fund	Social Justice, animal welfare and medical research.
Beltana Fund	Environmental, education, homeless, and health care specialised needs.
Biggin & Scott Fund	To take an active involvement in the local community in the suburbs where Biggin & Scott offices are located, offering property, auctioneering and marketing skills where appropriate.
Charles D'Aprano Award Fund	To provide funding for an annual scholarship which is awarded through Swinburne University of Technology, to a student who wishes to extend and further their Italian related studies in Italy.
Charles David Fund	Social equity, holocaust studies.
Chaskett Fund	Support for rare book purchases for Melbourne libraries, especially the State Library of Victoria, and support for bibliographical scholarship.
Cherie Millar Education Fund	Education, the arts and health in the LaTrobe Valley region.
Clack Family Memorial Fund	For general charitable purposes, in particular to fund innovative programs in media and the arts.
Connie & Craig Kimberley Fund	General charitable purposes.
Coronella Fund	Parent education, refugees, Indigenous education, environment and Bill of Rights (policy).

Fund Name	Area of Interest
Curlew Fund	Social justice, conservation, indigenous and cultural diversity.
Dara Fund No. 2	General charitable purposes.
David Jolley Leadership Award	To acknowledge and promote excellence and leadership in human services with a focus on tertiary social work education at La Trobe University across metropolitan and regional Victoria.
DDJE Fund	General charitable purpose with interest in education.
Dennoch Fund	To encourage sustained improvement in the preventative health, education and appreciation of cultural diversity.
DISCAL Fund	Disability and community advocacy.
Dominic Gianni Fund	To enhance the lives of children with a disability.
Dubsky Family Fund	Overseas aid, disadvantaged youth, education, the elderly and the arts.
Dumbarton Fund	Micro credit and water projects in developing countries, education for girls in Australia, housing and homelessness services and disadvantage in the Gisborne Region.
EastWeb Fund	Combating disadvantage and building community capacity amongst Victoria's indigenous community, asylum seeker and refugee communities.
Elizabeth Eggelston Fund	Aboriginal law issues.
EM Horton Family Fund	Promote social justice by assisting people to expand their capacity within our community to engage creatively and productively in the areas of youth, Indigenous, environmental, migrant and women's issues.
Eve & Bill Chandler Fund	General charitable purposes.
F H K T Fund	General charitable purposes.
Fairness Fund	Projects supporting education and employment, particularly for indigenous youth and women.
Fellowship for Indigenous Leadership Fund	Interested in Indigenous leadership and associated areas.
Finch Fund	General charitable purposes.
Fitted For Work	Fitted for Work or other programs that assist disadvantaged women gain financial independence.
Freetown Fund	Education, health, indigenous issues, homelessness and human rights.
Geostudies Fund	General charitable purposes, with interest in the environment.
Global Leadership Fund	To develop leadership within communities.
Greg Larsen Family Fund	Education to the disadvantaged in overseas countries and homelessness in Melbourne.
Grieve Family Fund	Social justice, especially with children and environmental issues.
Grigg Family Fund	Education, health, the environment and social justice, with a focus on homeless people, refugees, Indigenous Australians, women and families.
Grummitt Family Fund	Cancer, heart disease, aged care and health facilities. Community causes, education facilities and a special interest in needs within the Goulburn Valley.
Hamer Family Fund	Focus on the performing arts, especially music, innovation in care for the environment, opportunities for talented young people and projects that forward good government in Australia.
Hamer/Martin Environment Fund	The environment and conservation.
Hart Line Fund	General charitable purposes, principally in the areas of education, the arts and the environment.
Heather Watkins Memorial Fund	To assist families, especially those with young and teenage children, affected by suicide. In particular, support for the Jesuit Social Services' Support after Suicide program.
Henkell Family Fund	Emphasis on the vocal arts, in particular opera, as well as supporting the German-Australian community.
Henry Stein Fund	Projects which increase access to and participation in the community by adults with autism, intellectual or profound disabilities or a combination of these. Priority to be given to women, Indigenous people and those from a cultural and linguistically diverse (CALD) background.
Herbert and Inge Littauer Fund	Refugees, aged care, language and re-settlement projects, health and cancer research and support, innovation and entrepreneurship, theatre, arts and music, Jewish community support and language and learning.

Fund Name

Area of Interest

Hobsons Bay Community Fund	General charitable purposes within Hobsons Bay municipality.
Holding Redlich Social Justice Fund	To promote social justice in the community, with a focus on assisting disadvantaged young people with education, training, employment and health.
Howard McGeary Charitable Fund	Support for adults and children with physical and intellectual disabilities; the homeless and disadvantaged in the community. Care and protection of the environment/conservation and animals.
Howard Nathan Fund	Jewish culture and education. Homelessness.
Humphries Family Fund	General charitable purposes.
IM and SK Families Fund	General charitable purposes.
IRIS Fund	Gay and lesbian charities or community organisations and other general charitable organisations.
Isabella and Marcus Paediatric Brainstem Tumour Fund	Research into paediatric brainstem tumours with a focus on Diffuse Intrinsic Pontine Glioma.
James Family Fund	Early childhood, youth at risk, homelessness, international poverty aid.
Jeffrey Lipp Scholarship Fund	To build up and maintain the DVD library at Bouverie Clinic for training purposes.
Jenni Chandler Fund	General environmental issues.
Joan & David Harper McLennan Fund	Social justice.
John Cummins Memorial Fund	Support for brain tumour patients linked to Austin Hospital and educational opportunities for young people experiencing disadvantage in the northern suburbs.
Johnstone Gumption Fund	Environment, open spaces, regional botanical gardens. Projects that support 'citizenship' and 'community'. Health, in particular quality outcomes for patients.
Joy Mavis Schwartz-Seidler Musical Scholarship	Musical scholarship to students from Glossop High School in South Australia who have 1-2 year formal training and show musical growth potential.
Juliet Allen Fund	General charitable purposes.
June Shenfield Poetry Award Fund	An annual award to commemorate June Shenfield, designed to encourage Swinburne University students to write and become interested in publishing and reading poetry.
Kirkham Family Fund	Music and theatre, with emphasis on young artists and small theatre companies, and the environment and animal welfare.
Kokopelli Knights Fund	To bring joy to children with life threatening diseases who need inspiration and happiness.
Kristian Fredrikson Scholarship	Arts theatrical design/makers.
M & L Attwood Fund	Support for organisations in the Goulburn Valley area, extending to rural areas throughout Victoria. This includes organisations involved in mental health, disability, disadvantaged young people, environment, Aboriginal health and education and arts.
m.a.d.woman	General charitable purposes.
Malcolm Broomhead	General charitable purposes.
Matt & Clare Handbury Fund	Mental health, drug and alcohol treatment and personal and community connectedness.
Maureen Considine Fund	To support the ongoing operation of permanent accommodation for adults with an intellectual disability in the diocese of Sandhurst.
May Second Fund	General charitable purposes.
Mayer Morris Family Fund	Aboriginal Australians, refugees living in Australia and residents of Timor Leste.
MCF Community Fund	To generate and distribute philanthropic resources to address social issues in the communities.
McGregor Family Fund	General charitable purposes with an emphasis on education for the disadvantaged.
Melanie Holden Memorial Sub Fund	To financially assist a young cancer sufferer's attendance at the Gawler Foundation.
Melliodora Fund	Ecological sustainability, environmental advocacy, nature conservation.
Moodie Family Fund	Young people at risk, Indigenous Australians and depression.
Mt Buller Mt Stirling Art Fund	Commissioning and purchasing of artworks within the Alpine Region, as well as artist support in the area.
N & T Family Fund	Charities on the Mornington Peninsula.

Fund Name	Area of Interest
Nash Family Fund	General charitable purposes.
NE Renton Family Fund	Health and mental issues.
New Idea Breast Cancer Fund	Community support for women with breast cancer and research into causes and cures.
Nicholas R Taylor Fund	The environment, migrants and Indigenous people.
Omi-Albers Fund	Refugees, children/youth, social change and human rights.
P J & J P Murphy Fund	General charitable purposes.
Paterson Family Fund	Assistance to small groups without a voice, particularly people with disabilities.
Pomegranate Fund	Health, education and community development.
Quercus Fund	To support a variety of community initiatives.
Rana and Alan Fund	Overseas aid, especially in helping communities become self sufficient. Environment, indigenous programs, refugees, health and human rights.
rmg Account	Charitable purposes, especially regarding environmental sustainability, arts, education, and rural communities.
RO Fund	General charitable purposes.
Rod and Pamela Wells Community Fund	General charitable purposes.
Ron Castan Education Fund	Education, social justice, indigenous, minority and refugee issues, human rights/civil liberties.
Ronald and Mary Henderson Fund	Socio-economic research to tackle poverty Australia wide, particularly in Melbourne and rural areas.
S & J Rothfield Family Fund	Indigenous affairs, disadvantaged women's development in Australia and overseas, environment, education and a good start for disadvantaged groups.
Sally Browne Fund	Gawler Foundation, Royal Botanic Gardens, School of Botany at Melbourne University, motor neurone disease.
Sally Isaac Memorial Scholarship Fund	To create educational opportunities for young women aged 35 or younger who make a significant contribution to the community in fields of local government, social justice, Aboriginal affairs (including reconciliation), arts and music, community health, culturally and linguistically diverse communities, urban planning or the environment.
Sally Oatley Memorial Fund	To support initiatives in charitable areas, initially in mental health services, research, education and training, with emphasis on young people and families.
Sharman Mitzvah Fund	Education.
Silver Gold Fund	General charitable purposes, in particular education and the combating of disadvantage.
Slater & Gordon Asbestos Research Fund	To fund and support medical research to find a cure for asbestos related disease, particularly mesothelioma. To support the sharing of information amongst health professionals with respect to the prevention, treatment of asbestos related diseases.
Slater & Gordon Fund	General charitable purposes, to include social research, advocacy for disenfranchised persons with an emphasis on social justice.
Social Justice Fund	To contribute to the promotion of social and economic justice in Australia and in the developing countries of Africa, Asia, Latin America and the Pacific.
Strike a Light Fund	General charitable purposes.
Sunning Hill Fund	To enhance education and training opportunities for Aboriginal people in the Northern Territory and Kimberley.
Sunshine and Crocodile Fund	General charitable purposes, but with particular interest in indigenous communities and capacity building projects in Sri Lanka.
Tan Family Fund	Aboriginal issues and advocacy.
The Clements Fund	To support the Gawler Foundation's 'Life for Living' program and the renal cell carcinoma research program at the Austin Hospital.
Theresia Uehlin Fund	Tertiary indigenous education.
Thomas Family Fund	To support alleviation of poverty and hardship, particularly in Melbourne, and to support the arts, particularly ballet and the visual arts.
Thu Giang Nguyen Fund	Awarding an annual science prize to a student at Melbourne Girls College and a scholarship to an indigenous student in the Goulburn Valley.

Fund Name	Area of Interest
Together We Learn	Education, training and employment and community development for indigenous, disadvantaged and those experiencing rural isolation.
Towards a Just Society Fund	To assist in the reduction of current injustices affecting particular groups and individuals, currently with emphasis on Indigenous education/capacity building.
Trikojus Education Fund	Provide money for scholarships to disadvantaged and gifted children in government schools.
Turning Point Charitable Fund	Charitable purposes with particular emphasis on the alcohol and other drug sector.
Unico Community Fund	Support for social and community disadvantage, the environment and the arts.
Vicki Standish Family Fund	To support the well being of children and young people and to assist them to reach their potential.
Virgona Family Fund	To support activities of Friends of the Earth and the Boite.
Vivian-Stegley Fund	General charitable purposes.
Wayne Family Fund	To support educational and other initiatives for children from disadvantaged backgrounds.
Wellington Community Fund	Civic purposes in the Wellington shire.
Williams Fund	Programs which promote social justice, Aboriginal reconciliation, and sustainability of the environment, both in Australia and overseas. Focus on education and employment for disadvantaged, affordable housing, environment, and breast cancer.
Willmore Fund	For the purposes of education, with focus on committed underprivileged students – including youth at risk – to attend/or continue to attend school/university/TAFE and other educational institutions.
Wynn Family Fund	To help relieve disadvantage in public education and to help make a difference to the indigenous and refugee communities.
Zalewski Fund	Post-prison reestablishment for women, homelessness and mental illness.

National

Clemenger Staff Fund	Each state office has a different focus for grantmaking, from young people at risk to literacy and capacity development.
Dina Grollo Community Fund	Youth education and employment in the areas in which Grocon works.
Glenorchy Community Fund	Projects that will benefit and strengthen the Tasmanian community of Glenorchy
Slater & Gordon Community Fund	Social justice, social research, advocacy for disenfranchised persons.

Extension Fund

Australian Federation of University Women Victoria Scholarship Fund	Scholarship fund for women in tertiary education in Victoria and scholarships for women undertaking masters and doctoral studies.
Carreker Community Fund	General charitable purposes.
Sylvia Fisher Extension Fund	An extended study bursary to be awarded to a singer of professional potential, to be selected by Stephen Dee, General Manager, Victorian State Opera and Richard Divall, Principal Guest Conductor, for the purpose of furthering that singer's career.
Women's Health Victoria Fund	To provide an in-perpetuity method of donating to women's health that will ensure that priority issues continue to be pursued.

National Extension

Glenorchy Community Extension Fund	Projects that will benefit and strengthen the Tasmanian community of Glenorchy.
------------------------------------	---

Scholarship

AFUW Vic Scholarship Fund	Scholarship fund for women in tertiary education in Victoria undertaking undergraduate and diploma studies.
---------------------------	---

Gumnut Accounts

Berry Fund	Freetown Fund	Gumnut One	MOGGS
Dahkota Fund	giving4living	Jed John Mitchell Fund	O'Nibbs Gumnut
Edge Ways	Grayson Verley	Krils Fund	Parsons and Nathan Gumnut
Farrall and Nolan Family Account	Green Cities	M L Jones	Two Cents Fund
	Guddaa Sub fund	Mary & David Fund	

The role that professional advisers play in philanthropy is becoming more and more significant. Clients are looking for advice on how to integrate their charitable giving and philanthropy with their financial, tax, and estate planning, and as such the need for advisers to understand philanthropy, structured giving, and the various options and features of those options is increasing. Being able to identify the best options to meet individual client needs and then make the right referrals are essential. Studies have shown that clients not only want their advisers to discuss charitable giving, they expect it and advisers have also reported that providing philanthropic advice leads to increased client satisfaction and loyalty.

Melbourne Community Foundation has been working with professional advisers for the last five years, offering a range of support and educational services for both the advisers and their clients. As part of its formal governance structure, MCF has a Professional Advisers Committee whose role is to guide the Foundation on what services and support advisers need, to build a network of engaged and informed advisers and to promote MCF as an attractive and effective option for philanthropy.

The Professional Advisers Committee is chaired by Greg Larsen, MCF Board Member, and comprises both directors and external members, all with a wealth of experience and expertise. The current committee has senior representatives from KPMG, UBS, Pitcher Partners, Hall & Wilcox, Macquarie Private Wealth, WHK, DLA Phillips Fox, Mutual Trust, and Westpac Private Bank.

Melbourne Community Foundation runs an extensive professional advisers' support program in order to give advisers the information and knowledge needed when speaking to clients. Each year MCF runs a series of workshops and seminars covering topics ranging from charitable and philanthropic giving structures and trends; tax and legal issues; effective grantmaking; as well as covering a number of practical case studies.

This program is an integral component of Melbourne Community Foundation's donor development and follows an increasing number of referrals from professional advisers. MCF now has a number of 'champions' within small, medium and large professional advisory companies in Melbourne. Just as they are trusted advisers to their clients for financial, tax and estate planning, Melbourne Community Foundation is the trusted advisor for philanthropy.

Building champions with professional advisers



Chris Arnold MCF Ambassador, Stuart Rose, KPMG and MCF donors

Over the years I've seen too many people with good intentions fall by the wayside, because they believe they can't afford to establish and maintain their own charitable trust. I refer people to MCF to establish a sub-fund, because they can achieve their philanthropic objectives relatively cheaply and easily and can be as involved as they wish in the grantmaking activity of their sub-fund.

MCF provides ongoing advice to sub-funds, keeping them abreast with changing regulations and obligations. Philanthropists, especially those who live in the country, can be isolated and out of date otherwise. MCF's correspondence and meetings keep them informed and inspired.

My clients appreciate that MCF board members are volunteers and MCF is a lean organisation, so that the charitable funds contributed are not eroded by administrative costs.

Mary Stewart, Lawyer
Shepparton Victoria

What differentiates MCF from other providers and from going it alone with a PAF is MCF's grantmaking experience and expertise and its support in helping donors become effective philanthropists.

Sarah Robinson
Associate Director
Macquarie Private Wealth

MCF-building and energising a community of philanthropists



Melbourne Community Foundation provides comprehensive consulting and philanthropic services for clients, drawing on its unique experience, connections and expertise.

Over the past 12 years MCF has built considerable knowledge and practice around grantmaking, effective philanthropy, and around the design and development of philanthropic structures and operations.

MCF is able to review and evaluate philanthropic programs and operations and undertake feasibility studies for prospective philanthropic initiatives, including the establishment and development of new trusts and foundations.

MCF has a record as professional and skilled grantmaking. It researches, analyses and recommends funding for many charitable projects locally, nationally and internationally. Its research and consulting covers a broad range of client interests, from the arts, education, youth and the aged, to community development, the environment and indigenous issues.

MCF shares its expertise and learnings on a fee-for-service basis to benefit private foundations, including private ancillary funds (PAFs), individual donors, corporations and government.

Examples of projects undertaken in the financial year 2009-10 include:

- Tailored grant research and advice for a PAF which met the client's interests and brief.
- Research, consultation and advice regarding the establishment, governance and operation of a major new philanthropic trust which will enable indigenous communities to take greater control of conservation, cultural protection and sustainable development of Australia's land and seascapes;
- On-going advice for the Office of the Community Sector within the Department of Planning and Community Development relating to the rolling out of its Victorian Community Foundations Initiative.



The Green Gecko Project supporting street children in Cambodia

Grantmaking- going from strength to strength

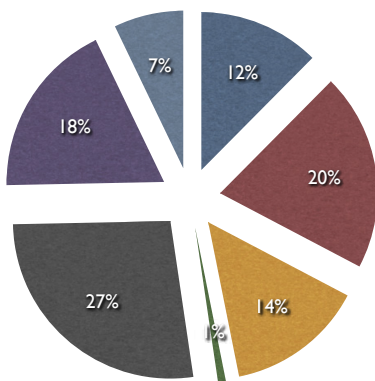
MCF's grantmaking program is going from strength to strength – with a greater number of donors making grants and an increasing amount being distributed each year.

In 2009-10 335 grants, totalling \$2.9 million were made across a wide range of social and environmental areas at local, national and international levels. A list of the grants is provided on page 18.

85 donors (over half of all MCF donors) made grants, up from 67 in the previous year. This reflects MCF's growing donor base and the readiness of donors to begin granting as a result of information provided to them, education programs and the range of grantmaking opportunities available through the MCF community.

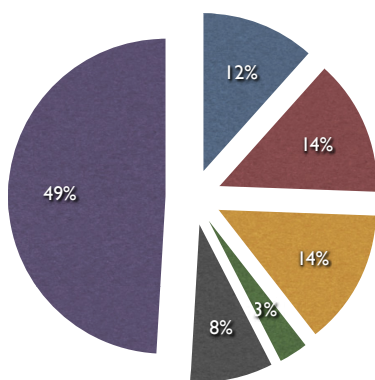
Compared to 2008-09, there was a significant increase in the percentage of funds made to the arts and culture area this year. This has increased from 4% to 13%, with increases in both the number of grants and the amounts distributed. The percentages directed to education/training/employment and community development/advocacy activities also increased slightly, whilst there were small decreases in other areas.

The percentage of funds being granted within Greater Melbourne continued to increase on previous years – largely the result of MacroMelbourne and the promotion of the projects contained in the MacroMelbourne report since its launch in December 2009. There has also been a small increase in the percentage of funds going to international projects, but less to state-wide and rural and regional areas within Victoria.



2009-10 \$ granted by area of interest

- Arts and Culture
- Community Development & Advocacy
- Community Services & Welfare
- Disability
- Education, Training & Employment
- Medical Research & Health
- Environment



2009-10 \$ granted by geographic regions

- International
- National
- Other States
- Rural/Regional Victoria
- Statewide
- Greater Melbourne

MCF GRANTS 2009-10

Recipient Organisation	Funded Activity	MCF Sub-fund
------------------------	-----------------	--------------

Arts & Culture



Left: *Ngayuku Ngura* 2010, designed by Nyankulya Watson, commissioned by the Tapestry Foundation of Victoria for the Australian Embassy in Rome and woven at the Australian Tapestry Workshop by Louise King, Amy Cornell, Emma Sulzer and Caroline Tully. Right: *The Threepenny Opera*, co-produced by Malthouse Theatre and Victorian Opera. Photo by Jeff Busby

3MBS-FM Development Fund	3MBS Ambassadors Circle	Henkell Family Fund
3MBS-FM Development Fund	General support	Annamila Fund
Adelaide Festival Centre Foundation Inc	General support	Carreker Community Fund
Australian Centre for Contemporary Art	General support	Annamila Fund
Australian Chamber Orchestra	Medici Program – Ilya Isakovich's Chair	Connie & Craig Kimberley Fund
Australian Chamber Orchestra	Education program	Ballandry Fund
Australian International Opera Awards Public Fund	General support	Henkell Family Fund
Bell Shakespeare Company Ltd	General support	Annamila Fund
Co Opera Inc	To support the long term future of Co-Opera	Henkell Family Fund
Dame Nellie Melba Opera Trust	General support	Henkell Family Fund
Fortyfive Downstairs Inc	General support	Hart Line Fund
Laurence Meikle	Study Bursary for Laurence Meikle	Sylvia Fisher Extension Fund
Library Board of Victoria	General support	Annamila Fund
Library Board of Victoria	Foxcroft Programme and Rare Book Summer School	Chaskett Fund
Melbourne Chamber Orchestra	MCO's Program 5 and regional program	Hamer Family Fund
Melbourne City Opera Fund	Support for the production of Andrea Chénier	Henkell Family Fund
Melbourne City Opera Fund	Support for the production of Luisa Miller	Henkell Family Fund
Melbourne International Festival of the Arts Limited	Emerald Patrons program	Sally Browne Fund
Melbourne Symphony Orchestra Pty Ltd	Purchase of concert grand piano	Henkell Family Fund
Mietta Foundation Inc	Mietta Song Recital Award	Henkell Family Fund
More Than Opera	German Australia Grant 2010 (2 grants)	Henkell Family Fund
More Than Opera	More Than Opera Gift Fund	Henkell Family Fund
More Than Opera	Support for the mini-Ring	Henkell Family Fund
Multicultural Arts Victoria Inc	Heracles High 5	Hamer Family Fund
National Trust Of Australia (Victoria)	German Lutheran Trinity Church	Henkell Family Fund
Opera Australia	Syndicate 30 Patron Programs performance of Bliss	Henkell Family Fund
Opera Australia	General support (3 grants)	Henkell Family and Ballandry Funds
Opera Foundation Australia Trust Fund	German Operatic Award	Henkell Family Fund
Opera Society Inc	General support	Henkell Family Fund
Playbox Theatre Company Ltd	Production of a new theatre work - S-27	Social Justice Fund
Regional Arts Victoria	The Role of Arts in Times of Crisis symposium	Clack Family Memorial and Hartline Funds

Recipient Organisation	Funded Activity	MCF Sub-fund
Regional Arts Victoria	Storytelling workshops	Clack Family Memorial Fund
Royal Melbourne Philharmonic Society	Royal Melbourne Philharmonic Aria Award	Henkell Family Fund
St Francis Choir	General support	Antoinette Richardson Memorial Fund
St Vincent's Hospital (Melbourne) Limited	Melbourne Bach Choir	Henkell Family Fund
State Orchestra of Victoria	General support	Henkell Family Fund
Swinburne University	2010 June Shenfield Poetry Award	June Shenfield Poetry Award Fund
Tapestry Foundation of Victoria	General support	Annamila Fund
The Lieder Society of Victoria	General support	Henkell Family Fund
The Lieder Society of Victoria	National Liederfest competition	Henkell Family Fund
The Melbourne Opera Company Limited	Support for the production of Tosca	Henkell Family Fund
The Melbourne Opera Company Limited	General support	Henkell Family Fund
The Opera School Melbourne	General support	Henkell Family Fund
The Opera School Melbourne	The Handel project	Henkell Family Fund
Trinity College	Trinity College Choir	Henkell Family Fund
University of Melbourne - Melbourne Theatre Company	Patrons Program	Sally Browne Fund
Victorian Arts Centre Trust	General support	Henkell Family Fund
Victorian Opera Company Ltd	General support (2 grants)	Henkell Family Fund



Building harmony on new housing estate – Windemere Child & Family Services (MacroMelbourne project)

Community development/advocacy

Australia For UNHCR	Kenya: Ifo Camp Youth Centre	Williams Fund
Australian Volunteers International	Program co-ordinator	Social Justice Fund
Australian Volunteers International	Professional development program in Uganda	Social Justice Fund
Australian Volunteers International	Documentary on Australian Indigenous Volunteers	Social Justice Fund
Brotherhood of St Laurence	Activities to support Sudanese Women	Ballandry, BB & A Miller, Omi Albers, and Social Justice Funds
Community Radio Federation Ltd	Afghani community radio show	EastWeb Fund
Community West Inc	Legal services at the Visy Cares Hub	Slater & Gordon Fund
Fronthitha Care	Integrated aged care services for financially disadvantaged elders	Agnes Robertson Fund
Global Development Group	Women's literacy, numeracy and vocational training in Afghanistan	Social Justice Fund
Hotham Mission (UCA)	Pre-employment training for asylum seekers	EastWeb Fund
International Women's Development Agency	Women's food security and income generation in Cambodia	Social Justice Fund
International Women's Development Agency	Womens transition to self reliance in Sri Lanka	Social Justice Fund
Jesuit Social Services	Whittlesea youth diversion project	Sunshine and Crocodile Fund
Jesuit Social Services	Somali Australian Council project worker	Ballandry Fund
Koorie Heritage Trust	Lucknow Cricket Club	Anna Wearne Fund

Recipient Organisation	Funded Activity	MCF Sub-fund
Koorie Heritage Trust	Engaging Our Own	Vicki Standish Family Fund
Melbourne City Mission Inc	Youth Voice Enterprise	Williams Fund
Monash University	Tax Watch: facilitating a fairer tax system for Australia	Social Justice Fund
National Council of Churches in Australia	Construction of wells in Tigray Province, Ethiopia	Strike a Light and Social Justice Funds
National Education and Employment Foundation	Balibo House Trust	Dina Grollo Community Fund
Oxfam Australia	Economic empowerment of women, East Asia livelihoods program	Social Justice Fund
Oxfam Australia	Trailwalker Melbourne	Dina Grollo Community Fund
Oxfam Australia	Fitzroy Stars sports club	Coronella and Social Justice Funds
Oxfam Australia	Straight Talk Summit 2010	Coronella, Social Justice and Wynn Family Funds
Plan International Australia	Community led sanitation program in Laos	Social Justice Fund
Safety House Association of Victoria	Streetskills initiative	Henkell Family Fund
Tabitha Foundation Australia	Family savings program in Cambodia	Social Justice Fund
Tabitha Foundation Australia	Cambodia safe drinking water program	Social Justice Fund
The Australia Institute	Research into green jobs as low emission jobs	Social Justice Fund
The Australia Institute	Research into legal aid access in Australia	Social Justice Fund
The Hunger Project	Uganda projects	Inder Kaur Education Fund
The Hunger Project	African Women Food Farmer Initiative	Social Justice Fund
The Hunger Project	General support	Omi-Albers Fund
Western Suburbs Legal Service Incorporated	Legal information for minority groups	Hobsons Bay Community Fund-Extension
Windermere Child and Family Services	Building harmony on new housing estates	Sunshine and Crocodile and Grigg Family Funds
World Education Australia	Laos microfinance project	Social Justice Fund

Community services/ welfare



Left: Asylum Seekers Resource Centre Community Garden



Right: Secondbite provides fresh produce to over 105 food relief agencies throughout Victoria

Asylum Seekers Resource Centre	General support	Curlew Fund
Asylum Seekers Resource Centre	Foodbank program	Williams Fund
Australian Red Cross Society	Haiti earthquake appeal	IM and SK Families Fund
Australian Red Cross Society	Relief work in Samoa and Indonesia	NE Renton Family and Unico Community Fund
Australian Red Cross Society	Christmas Island humanitarian monitoring and community development project officer	Grigg Family Fund
Baptist Community Care	Sanctuary program	Omi-Albers Fund
Baptist Community Care	Sanctuary monthly communal meals program	EastWeb Fund
Big Brothers-Big Sisters (Melbourne) Inc	Big Brothers Big Sisters mentoring program	Grigg Family Fund
Brisbane Youth Service Inc	General support (2 grants)	Holding Redlich Social Justice Fund
Brotherhood of St Laurence	General support (2 grants)	Dina Grollo Community Fund
Brotherhood of St Laurence	Atherton Gardens Breakfast Club	Dina Grollo Community Fund

Recipient Organisation	Funded Activity	MCF Sub-fund
Carer Links Men's Group	Mens support group	Hobsons Bay Community Fund-Extension
Caritas Australia	Haiti earthquake appeal	Henkell Family Fund
Christian Churches Network	Hobsons Bay Christian Church free meal program	Hobsons Bay Community Fund-Extension
Christian Outreach Ministries	Children's home in Sambalpur, Orissa, India	Slater & Gordon Extension Fund
Church of All Nations of Carlton Welfare Agency	School holiday program (4 grants)	Anna Wearne Fund
Churches of Christ Community Care	Helping Hand Learning, Williamstown	Hobsons Bay Community Fund-Extension
Common Ground Queensland	Establishment of Common Ground, Queensland	Dina Grollo Community Fund
Common Ground Queensland	Project Coordinator	Dina Grollo Community Fund
Fareshare Australia	Put Rubber on the Road	Clemenger Staff Fund
Finnish Society of Melbourne	Sports program	Hobsons Bay Community Fund-Extension
Gold Coast Drug Council	General support (3 grants)	Dina Grollo Community Fund
Hanover Welfare Services	General support	Grigg Family Fund
Hotham Mission (UCA)	Asylum Seekers Assistance Project	Williams Fund
Interchange Western Region	Hobsons Bay Support Group	Hobsons Bay Community Fund-Extension
Kids Under Cover	General support (2 grants)	Dina Grollo Community Fund
Liberation Prison Project	General support	Sally Browne Fund
MECWA Community Care	General support	F H K T Fund
Melbourne Chin Community	Soccer tournament	Hobsons Bay Community Fund-Extension
Melbourne Zen Hospice	General support	Sally Browne Fund
Migrant Information Centre Eastern Melbourne	Homework club and settlement support services	EastWeb Fund
Murray Valley Sanctuary Refugee Group	Familiarisation excursions for new settlers	Helen La Nauze Fund
Odyssey House Victoria	General support	F H K T Fund
Oxfam Australia	Relief work in Samoa and Indonesia	Geostudies Fund
Oxfam Australia	Haiti earthquake appeal	Henkell Family Fund
Plan International Australia	Haiti earthquake appeal	Fairness Fund
Prahran Mission	General support	F H K T Fund
Prahran Mission	Building project	Sally Browne Fund
Rise (Refugee Survivors & Ex-Detainees)	General support	DDJE Fund
Salvation Army Australia Eastern Territory Social Work	Oasis program (2 grants)	Dina Grollo Community Fund
Salvation Army Australia Eastern Territory Social Work	Salvation Army Westcare - Melton Foster Care	Henkell Family Fund
Salvation Army Red Shield Appeal	General support	F H K T Fund
Save the Children Australia	Haiti earthquake appeal	Henkell Family Fund
Seafarers Welfare Fund	General support	Annamila Fund
SecondBite	SecondBite transport vans	B B & A Miller Fund
SecondBite	Purchase of OHS equipment	Charles David Fund
The Avalon Centre	Support for the homeless in Melbourne	Avalon Circle
The Exodus Foundation	General support	Dina Grollo Community Fund
Travellers Aid Australia	Emergency relief service (2 grants)	Travellers Aid Fund
Travellers Aid Australia	Travellers Aid travel services	Curlew Fund
United Nations Childrens Fund	UNICEF Pacific Emergencies Appeal	Unico Community Fund
United Nations Childrens Fund	Haiti earthquake appeal	Henkell Family Fund
Variety Club of Victoria Inc	Children's Christmas Party 2009 and 2010	Biggin & Scott Fund
Very Special Kids	General support	Henkell Family and FHKT Funds

Recipient Organisation	Funded Activity	MCF Sub-fund
Victorian Foundation for Survivors of Torture Inc	Crisis Fund	B B & A Miller and Tan Family Funds
Western Region Health Centre Ltd	Floyd Lodge computer training and access program	Hobsons Bay Community Fund-Extension
White Lion Incorporated	Bundji Bundji Elder Program	Vicki Standish Family Fund
White Lion Incorporated	2009 Eureka Tower Climb	Dina Grollo Community Fund
White Lion Incorporated	General support	Grigg Family Fund
White Lion Incorporated	Young Women's Support Service	Vicki Standish Family Fund
World Vision Australia	Haiti earthquake appeal	Sally Browne Fund
Youth Off The Streets Limited	Don Bosco House (2 grants)	Holding Redlich Social Justice Fund
Youth Off The Streets Limited	General support (2 grants)	Dina Grollo Community Fund

Disability



Job Support worker, Craig, in Melbourne

Able Australia Services	General support	F H K T Fund
Cerebral Palsy Education Centre	General support	Two Cents Fund
Inclusion Melbourne	Documentary film	Anna Wearne Fund
Job Support Inc	Job support in Melbourne	NE Renton Family Fund
Mulleraterong Centre Inc	General support	Finch Fund
Vision Australia	General support	F H K T Fund
World Relief Overseas Aid Fund	Australia Pacific Islands Disability Support	DISCAL Fund
Yooralla Society of Vic	General support	Geostudies Fund

Education/training/ employment



Left: The Social Studio is a social enterprise which assist young people from a refugee background undertake a career in fashion design and retail.

Right: The Song Room - engaging young people through creativity

Aboriginal Evangelical Fellowship Family and Youth Services	Achieving goals through education	Towards a Just Society Fund
Aboriginal Literacy Foundation	Literacy program in rural Victoria	Social Justice Fund
Anh Hoang Tran	Scholarship program	John Cummins Memorial Extension Fund

Recipient Organisation	Funded Activity	MCF Sub-fund
Ardoch Youth Foundation Inc	General support	Unico Community Fund
Ardoch Youth Foundation Inc	Literacy Buddies program	Unico Community Fund
Ardoch Youth Foundation Inc	Southern Teaching Unit (2 grants)	Holding Redlich Social Justice Fund
Australian Federation of University Women - Victoria	2010 scholarships	Australian Federation of University Women Victoria Scholarship Fund
Australian Marist Centre Overseas Aid Fund	Educational program, Ranong, Thailand (2 grants)	Greg Larsen Family Fund
Australian National University	Evaluation of TJSF bursary approach	Towards a Just Society Fund
Banyule Community Health Service Inc	Koorie Numeracy Support Teacher – Northland Secondary College	Social Justice and Towards a Just Society Funds
Berry St Victoria	Alexandra primary school drama program	Connie & Craig Kimberley Fund
Charles Darwin University	Sunning Hill Bursary	Sunning Hill Fund
Coburg Senior High School	Scholarship program	John Cummins Memorial Extension Fund
Dungala Kaiela Foundation	Koori pre-school storytime	EastWeb Fund
Eastern Health - Turning Point Alcohol & Drug Centre	Staff development	Turning Point Charitable Fund
First Nations Foundation	Indigenous financial literacy program	Williams Fund
Fitzroy High School	Scholarship program	John Cummins Memorial Extension Fund
Glossop High School	Joy Mavis Seidler Scholarships	Joy Mavis Schwartz-Seidler Scholarship
Hands on Learning Australia	Educational programs	Grigg Family Fund
King David School Building Fund	Building fund	Howard Nathan Fund
King David School Scholarship Fund	Scholarship program	DDJE Fund
Koori Economic Employment Training Agency Inc	Thu Giang Nguyen Indigenous Encouragement Scholarship (2 grants)	Thu Giang Nguyen Fund
Koorie Heritage Trust	Indigenous education curriculum	Towards a Just Society Fund
Lara Secondary College	Scholarship program	John Cummins Memorial Extension Fund
MacKillop Family Services	Family literacy services in Melton	Silver Gold Fund
MacKillop Family Services	Homework support for children, young people and their families	MCF Community Fund
Melbourne Anglican Cultural Organisation Inc	Rwanda peace education project for secondary schools	Social Justice Fund
Migrant Information Centre Eastern Melbourne	Improving employment options for refugee youth	EastWeb Fund
Monash University	Eggleston Memorial Library and Elder in residence program	Elizabeth Eggleston Fund
Monash University	Indigenous bursary scheme	Towards a Just Society Fund
Monash University	Eric Dubsy Memorial Award	Dubsy Family Fund
Monash University	Indigenous students guide to undergraduate scholarships	Social Justice Fund
Monash University	The Aspiration Initiative	Social Justice Fund
Nambucca Valley Youth Services Centre	Mentoring program for Indigenous students (2 grants)	Towards a Just Society Fund
Northern Melbourne Institute of TAFE	NMIT Study Grant Program	Aboriginal Student Bursaries Fund
Northland Secondary College	Scholarship program	John Cummins Memorial Extension Fund
Plenty Valley Community Health	Bubup Wilam Indigenous education pathways	Coronella, Wynn, Social Justice, Fairness and S & J Rothfield Family Funds
RMIT	Herbert and Inge Littauer nursing scholarship	Herbert and Inge Littauer Fund
Rotary Australia Overseas Aid Fund	Green Gecko project	Clemenger Staff Fund
Save the Children Australia	Operation Newstart	Social Justice Fund
Scotch College Foundation	General support	Ballandry Fund
St Mary's House of Welcome	Client Training Project	Joan & David Harper McLennan Fund

Recipient Organisation	Funded Activity	MCF Sub-fund
Swinburne University	Unico Equity Scholarship	Unico Community Fund
The Australian Ballet	Kristian Frederikson Scholarship for Design in the Performing Arts Award	Kristian Fredrikson Scholarship
The Foundation for Young Australians	Thu Giang Nguyen Science Prize	Thu Giang Nguyen Fund
The Smith Family	Learning for Life Scholarships	B B & A Miller Fund
The Smith Family	Youth financial literacy program	Dennoch Fund
The Social Studio	Training programs at the Social Studio	Assia Altman Fund
The Song Room Inc	The Song Room - engaging young people through creativity	Clemenger Staff Fund
The Trustee for the Room to Read Foundation	General support	Carreker Community Fund
Toorak College	General support (2 grants)	Alice Sloan Fund
Trinity College	Young Leaders Summer School	BB & A Miller and Towards a Just Society Funds
Trinity College	Deep Ecology Workshop	Tan Family Fund
University College	Scholarship program	Williams Fund
University of Ballarat	Plantations and climate change	Melliodora Fund
University of Ballarat	Scholarship for University of Ballarat student	John Cummins Memorial Fund
University of Melbourne	Indigenous bursary scheme	B B & A Miller and Towards a Just Society Funds
University of Melbourne	Social Inclusion Forum	Slater & Gordon Fund
University of Melbourne	Research projects within School of Botany	Sally Browne Fund
University of Melbourne	Scholarship program	Williams Fund
University of Melbourne	Indigenous bursary scheme	Aboriginal Student Bursaries Fund
University of Sydney	The Handbury Project	Matt & Clare Handbury Fund
Wathaurong Aboriginal Co-Operative Ltd	Storyteller boardgame	Towards a Just Society Fund
Wesley Mission Victoria	Indigenous Sports Foundation	Towards a Just Society Fund
Western Chances	Scholarship program	Annamila, Anna Wearne and DDJE Funds
White Lion Incorporated	Work Futures program	Silver Gold Fund
Whittlesea Community Connections Inc	Women in Work community enterprise	Sunshine and Crocodile Fund
Worawa Aboriginal College Inc	General educational support	S & J Rothfield Family Fund
Yalari Ltd	Indigenous scholarships	RO Fund

Environment



Left: The Australian Wildlife Conservancy acquires land and works with other landholders to establish sanctuaries for the conservation of threatened wildlife and ecosystems. Photo N.Rains/Australian Wildlife Conservancy Right: TreeProject is a non-profit community organisation dedicated to revegetating the Victorian landscape with indigenous trees, shrubs and grasses

Australian Conservation Foundation	Climate Project Australia	Annamila Fund
Australian Wildlife Conservancy	General support	May Second Fund
Bush Heritage Australia	Land acquisition fund for Nardoo Hills Reserve	Geostudies Fund
Climate Institute (Australia) Ltd	Regional Climate Futures Congress - Victorian series	Hamer Family and Hamer/Martin Environment Funds
Climate Positive	Safe Climate Australia	Williams Fund
Conservation Council ACT Region Inc	Boobook Declaration campaign	Melliodora Fund

Recipient Organisation	Funded Activity	MCF Sub-fund
Friends of the Earth	Barmah-Milewa campaign	S & J Rothfield Family Fund
Friends of the Earth	Red Gum National Park	Ballandry, S & J Rothfield Family and Wynn Family Funds
Invasive Species Council	Double Trouble: pests and climate change	Curlew Fund
Norman Wettenhall Foundation	Victoria's Geology and Landscapes	Melliodora Fund
Royal Botanic Gardens Board	Directors Circle supporters program	Sally Browne Fund
Stop the Toad Foundation	Cane toad muster 2009	APT Conservation And Charitable Fund
The Lost Dogs Home	General support	Henkell Family Fund
The Tree Project	Tree planting program	Unico Community Fund
The Wilderness Society Inc	No Pulp Mill Alliance Coordinator	Curlew Fund
Victorian National Parks Association	Habitat 141 community workshops	Melliodora Fund
Watermark Inc	Gippsland Lakes Prize	Allaway Lancashire Fund
World Wide Fund For Nature Australia	Climate change communications and research strategy	Melliodora Fund

Medical research/ health



Left: MSF Australia is a branch of the international medical relief organisation that aids victims of armed conflict, epidemics, and other disasters.

Right: Red Cross breakfast

Alzheimers Disease & Related Disorders Association of Victoria	General support	F H K T Fund
Arthritis Victoria	General support	F H K T Fund
Asbestos Diseases Society of Australia Inc	Vojakovic Fellowship (6 grants)	Slater & Gordon Asbestos Research Fund
Austin Health	Clinical cancer trials for kidney cancer	The Clements Fund
Austin Health	Brain tumor support officer	John Cummins Memorial Extension Fund
Australian Lung Foundation	Slater and Gordon Asbestos Research Grant-in-Aid Award 2010	Slater & Gordon Asbestos Research Fund
Bonnie Babes Foundation	General support	Sally Browne Fund
Brainwave Australia	Weekend retreat	Clemenger Staff Fund
Bravehearts on the Murray	Albury Wodonga breast cancer support group	Helen La Nauze Fund
Brisbane Royal Children's Hospital	General support (2 grants)	Dina Grollo Community Fund
Cancer Council NSW	General support	Biggin & Scott Fund
Canteen-The Australian Organisation for Young People Living with Cancer	General support	Henkell Family Fund
Cystic Fibrosis Victoria	'It's about family'	B B & A Miller Fund
Ilhan Food Allergy Foundation	General support	Dina Grollo Community Fund
Interplast Australia and New Zealand	2009 Eureka Tower Climb	Dina Grollo Community Fund
Macfarlane Burnet Institute for Medical Research and Public Health	General support	F H K T Fund
Marie Stopes International Australia	Improving access to reproductive health services in Papua New Guinea	Alf And Meg Steel Fund
Martin Luther Homes Boronia	General support	Henkell Family Fund

Recipient Organisation	Funded Activity	MCF Sub-fund
McGrath Foundation Limited	Breast cancer nurse project	New Idea Breast Cancer Fund
Medecins Sans Frontieres Australia	General support	Grigg Family Fund
Medecins Sans Frontieres Australia	Haiti earthquake appeal	Henkell Family and Unico Community Fund
Mental Health Research Institute	Improving the mental health outcomes of asylum seekers	Omi-Albers Fund
Monash University	MS Research	F H K T Fund
Monash University	General support - Child Abuse Prevention Research Australia	May Second Fund
Murdoch Childrens Research Institute	General support	Ballandry Fund
Peter MacCallum Cancer Institute	General support	F H K T Fund
Royal Childrens Hospital	Royal Childrens Hospital Foundation	Henkell Family Fund
Royal Flying Doctor Service of Australia	General support	F H K T Fund
South Eastern Sydney and Illawarra Area Health Service	Prince of Wales Hospital Cancer Centre	New Idea Breast Cancer Fund
St Vincent's Hospital (Melbourne) Limited	St Vincent's Cancer Centre	NE Renton Family Fund
St Vincent's Hospital (Sydney)	Support for research assistant	Slater & Gordon Asbestos Research Fund
Tabulam and Templer Homes for the Aged Inc	General support	Henkell Family Fund
The Asbestos Diseases Research Foundation	Gene expression profiling of mesothelioma research project	Slater & Gordon Asbestos Research Fund
The Baird Institute	Research scholarship for malignant pleural mesothelioma	Slater & Gordon Asbestos Research Fund
The Cancer Council of Victoria	General support for breast cancer research	Williams Fund
The Gawler Foundation Inc	The Life and Living residential program	The Clements Fund
University of Melbourne	The WHO pocketbook for the hospital care of children	Social Justice Fund
University of Melbourne	Principal Fellow in Paediatric Social Work (Infant & Family)	Dara Fund No. 2
University of Sydney	The Handbury Project	Matt & Clare Handbury Fund



Bush Heritage Australia Nardoo Hills Reserve, Victoria

The MacroMelbourne initiative's research and project reports were launched from level 89 of Melbourne's Eureka Tower in December 2009. The venue was particularly appropriate as from there you could see Melbourne sprawling in all directions out to the urban growth communities of Cardinia, Casey, Hume, Melton, Whittlesea and Wyndham.

Research

The research undertaken by the McCaughey Centre at Melbourne University provided compelling evidence that we should focus this phase of MacroMelbourne on the urban fringes of Melbourne, where resources and services are needed to ensure the development of healthy, well serviced and supported communities.

While the research report acknowledged that there is ongoing evidence of disadvantage and inequality across a mix of urban neighbourhoods and communities, the rapid population growth on the urban fringe, combined with an acute lack of existing social and physical infrastructure, made this a particularly urgent focus for innovation and intervention.

Projects

Building on the research, the project report identified 14 projects based across the six urban growth areas, each one addressing one or more of the key challenges facing these communities, such as housing affordability, social equity, access to public transport and communications, environmental sustainability and public health.

The reports were distributed widely within the philanthropic and corporate sectors and specific projects promoted to grantmakers with an interest in the issues they were addressing.

At a major MacroMelbourne Forum and Project Expo held in March this year, a panel of experts discussed the rapid population growth and its implications for the urban growth areas. The event allowed an opportunity for forum participants to move from stall to stall talking directly to project representatives about their work and the support they were looking for in order to implement their projects.

Funding to Date

Progress in the nine months since the launch has been amazing – a total of \$650,000 has so far been raised towards the projects, from both MCF donors and other grantmakers.

Five projects are already fully funded and well and truly underway. Another seven are partially funded and several of these have started operation. Only two of the 14 projects are yet to receive the required funding. Several of the projects are awaiting the outcome of requests for support from other funding bodies.

The response to this phase of MacroMelbourne clearly shows that philanthropy and community are looking to engage with, and invest in, evidence based, proactive projects that will help make Melbourne a livable, equitable and sustainable city and which meet the economic, environmental and social challenges of the next 20 years.

We are keen to see all of the projects funded and implemented over the next six months – there are still a range of opportunities for interested funders, so feel free to contact us.

For more information about the MacroMelbourne initiative, or to download copies of the research and project reports, go to www.communityfoundation.org.au and follow the links under MCF Grantmaking.

Macro Melbourne in 2010



Launch of MacroMelbourne at the Eureka Tower in December 2009



Launch of the Hume & Whittlesea Community Shuttle Service by the Minister for Community Development, Lilly D'Ambrosio

MCF's community of donors



German Australia Opera Grant



Co Opera

Melbourne Community Foundation provides the engine, and the products for philanthropic giving. Donors establish sub funds and with the support of the Foundation's knowledge and expertise, grants are made to a diverse range of organisations. MCF provides opportunities for its donors to meet with each other, to learn more about philanthropy and to meet or become involved with organisations that their sub-fund supports. Below, two of our donors share how they use their sub-fund at MCF to support their philanthropic activities.

Henkell Family Fund

Hans Henkell of Henkell Brothers Investment Mangers Pty Ltd established a sub-fund with Melbourne Community Foundation as the Henkell Family Fund (HFF) in 2006. Hans and the company have always donated generously within the community and the sub-fund was formed to receive assistance with the administration of grant distributions. HFF has generally been established to support the German-Australian community in Melbourne in particular institutions with charitable and community-based purposes, as well as purposes 'with a focus on the operatic and Lied art'. Our fund has also given hardship relief.

Establishing and operating a sub-fund through MCF helps us to administer grants more easily. We have been supportive of artistic organisations and groups – in particular in the area of vocal art. Hans Henkell, a German born business man and philanthropist, grew up under an extended cultural and operatic influence. His father was always a role model for him in regards to community support whilst his mother was the role model in performing and associating with artists and to make music. Hans likes to support the opera in particular, to ensure that this art form survives and flourishes in Australia.

Opera is a very traditional art form. It receives little support from the general public and in comparison to sports events little support from the government. The Henkell Family Fund has distributed grants to stimulate and support operatic activity in Melbourne, to ensure that organisations and groups producing actual entertainment accessible to the public are supported in more substantial ways.

The Henkell Family Fund has distributed funds to projects of the following organisations and groups:

- | | |
|--|--|
| Operatic and Lied Art | Orchestra Victoria |
| Australian International Opera Awards | Royal Melbourne Philharmonic |
| Australian National Academy of Music | St Vincent Foundation (Bach Choir) |
| Chamber Music Australia | The Arts Centre |
| Co Opera | Trinity College Choir |
| Dame Nellie Melba Opera Trust | Victorian Opera |
| German-Australian Opera Grant | 3MBS Classic Music |
| Lieder Society of Victoria | Community and Hardship Projects |
| Melbourne City Opera | Canteen |
| Melbourne Opera Company | Lost Dogs Home |
| Melbourne Symphony Orchestra | Lutheran Trinity Church (National Trust) |
| Mietta Song Award | Martin Luther Homes |
| More than Opera Ltd | Royal Children's Hospital Foundation |
| Opera Foundation Australia (German Operatic Award) | Safety House |
| Opera School Melbourne | Salvation Army |
| Opera Society | Tabulam and Templer Homes |
| | Very Special Kids |

And special hardship relief such as after the Haiti and Pakistan disasters (through UNICEF, Oxfam, Caritas, Save the Children, Medecins Sans Frontiers, Plan)

We are still building the corpus of the sub-fund, but have made grants to a number of causes already. We appreciate the cooperation with Melbourne Community Foundation in helping maintain and developing the family sub-fund.

Hans Henkell

Holding Redlich Social Justice Fund

Holding Redlich is a mid-sized law firm with offices in Melbourne, Sydney and Brisbane. The firm's Social Justice Fund was established as an MCF sub-fund in 2006.

Around one third of staff and salaried partners contribute regularly through payroll deductions which are matched by the firm. Staff contributions are distributed to community projects assisting disadvantaged youth in Melbourne, Brisbane and Sydney twice a year, while the partners' contributions remain in the Fund with earnings also going to support the projects.

The Fund has made donations totalling \$100,000 since 2006, with support currently going to the following organisations.

- Brisbane Youth Services, which focuses on homeless or at-risk young people on the streets in the inner-city area, particularly those harming themselves and others through drug and alcohol use and dependency, prostitution, violence and other offending behaviours.
- Through the Ardoch Youth Foundation we assist the Southern Teaching Unit, which provides 15 weeks of intensive support and education for students who are experiencing serious social, emotional, behavioural and/or educational difficulties, with the aim of reintegrating them into formal education.
- Don Bosco House in Sydney, a project of Father Chris Riley's Youth Off the Streets, provides crisis and short-term accommodation for homeless adolescents aged 15-18 years old. A large old house in Marrickville, the refuge provides support, accommodation and basic human needs such as food, clothing, safety, hygiene, access to health care and referrals to other services.

These projects were selected after a firm-wide survey identified disadvantaged young people as the cause employees wished to support. A committee with members in each state then selected the recipient organisations, with advice from MCF. The committee also reviews the organisations and has shifted the funding a couple of times, although the aim is to support a project consistently so as to provide certainty and encourage the development of a relationship with the firm.

Connections have been built with the projects in a number of ways. In Brisbane, Holding Redlich lawyers have provided pro bono legal services for Brisbane Youth Services and also staff a regular Homeless People's Legal Clinic located at BYS. Donations have provided equipment and other resources for the Young Parents Group and have furnished units providing accommodation for homeless young families.

In Melbourne staff attend lunches with the young people at the Southern Teaching Unit and have been present to recognise the achievements of each group at their graduation. Donations have been used for a new fridge and dishwasher, art materials and, for one group, a trip to Sydney.

In Sydney, staff have visited Don Bosco House and have also hosted a presentation at the office to give everyone an opportunity to hear more about the work of Youth Off The Streets. Donations have helped to establish an incentive scheme to encourage young people to overcome their difficulties by engaging with caseworkers, attending educational or drug and alcohol programs, and working towards achieving stable accommodation,



Brisbane Youth Services – Forklift Training Program



Ardoch Youth Foundation

Financial Report

The assets of the Melbourne Community Foundation, Melbourne Community Foundation Extension Fund, Melbourne Community Foundation Scholarship Fund, the National Community Foundation and the National Community Foundation Extension Funds are held in the name of the trustee company, Community Foundation Network Ltd.

Investment Management

The Board of MCF sets and regularly reviews the asset mix for funds under investment.

All funds are placed under management with MCF's investment manager according to the mandate and service agreement. All investments are held in the name of the Trustee. There is no custodian.

The asset mix may include equity, fixed interest, listed hybrid securities, listed and unlisted trusts, unlisted private equity, derivatives and cash.

The asset allocation tables below are based on professional advice from MCF's investment manager and are designed to provide a benchmark or strategic asset allocation and limits to the allowable tactical investment ranges for each portfolio. The mix will vary over time in order to benefit from opportunities and protect against downside risks.

Long Term Growth

- The long-term growth investment option is the core MCF investment approach for building endowment and generating annual income for distribution. The strategic asset allocation is 80% growth assets and 20% cash or fixed interest securities.
- The investment objective of the long-term growth portfolio is to achieve a total rate of return of at least 4% (after investment fees) greater than the Consumer Price Index ("CPI") over a rolling seven year period.

Long Term Growth Portfolio – 80% Allocated to Growth Assets

(Maximum Exposure to Growth Assets 85%)

Asset Class	Tactical Investment Ranges	Strategic Asset Allocation
Cash	0% - 30%	5%
Fixed Interest	5% - 40%	15%
Australian Equities	40% - 60%	50%
International Shares	0% - 30%	20%
Australian Property	0% - 20%	10%
Total		100%

Medium-term income investment

- The medium-term income investment approach is designed primarily for two situations:
 - where the intention of the sub-fund is to grant capital as well as income and where the sub-fund may be granted out within a shorter period of time, say 3-5 years; and
 - flow-through giving programs, primarily workplace giving, where employee contributions are distributed, and corporate contributions are used to build the endowment (the corporate contributions use the long-term growth investment approach).
- The strategic asset allocation is predominately cash and fixed income securities and targeted to have 15% in growth assets (Australian equities and/or property).
- The investment objective of the medium-term income portfolio is to achieve a total rate of return in excess of the UBS Bank Bill Index (after investment fees) over a rolling three year period.

Medium Term Income Portfolio – 85% Allocated to Income Assets

(Maximum Exposure to Growth Assets 20%)

Asset Class	Tactical Investment Ranges	Strategic Asset Allocation
Cash	5% - 30%	10%
Bank Bills	0% - 35%	25%
Term Deposits	0% - 50%	40%
Corporate Bonds	0% - 15%	5%
Hybrids	0% - 20%	5%
Australian Equities	0% - 20%	10%
Property	0% - 15%	5%
Total		100%

Environmental, Social and Governance (ESG) Investment Guidelines

Under the mandate, MCF's investment manager will be responsible for adhering to MCF's ESG guidelines. MCF believes that good corporate governance is very important and seeks to promote sound environmental, social and governance practices. For those investments which are directly held by MCF (ie, not in a unit trust or other pooled investment entity) MCF has a two pronged approach to promote good governance and ESG principles:

- specific exclusions for Australian equities where the company's dominant purpose or product relates to tobacco, gambling or weapons;
- MCF will be an active investor and vote its stock. In determining how to vote MCF takes advice from corporate governance agencies to ensure it exercises its vote in an informed and responsible manner.

Investment Performance

MCF Investment Performance Commentary

The investment objectives of MCF's Funds are based on the assumption that a high proportion of The Fund will be retained in perpetuity. The asset allocation of the fund reflects this objective with the funds invested in a diversified portfolio of equities and fixed income.

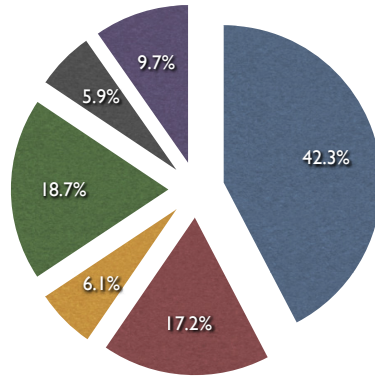
Over the 12 months to June 2010, global equity and fixed income markets remained volatile as the global economy emerged from the deep recession of the previous year. However, it was pleasing after several difficult years both equity and bond markets produced positive returns for the year albeit with a high level of volatility. A relatively conservative investment strategy was adopted for the MCF funds for the financial year 2009-10 which enabled us to achieve a positive return with a below average level of risk or volatility.

Financial Year investment returns

	Capital	Income	Total
	Return %	Return %	Return %
2009-10	1.48%	3.80%	5.28%
2008-09	-18.55%	5.34%	-13.21%
2007-08	-18.21%	5.4%	-12.81%
2006-07	17.64%	4.63%	22.27%
2005-06	13.59%	5.11%	18.70%

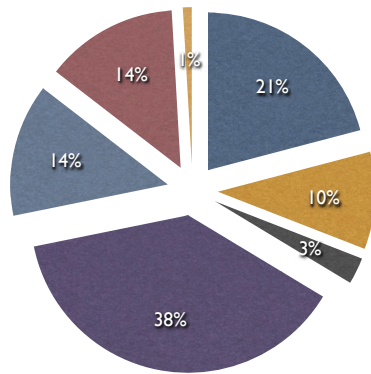
Investment Portfolio

The following information gives a snapshot of MCF's investment portfolio as at 30 June 2010.



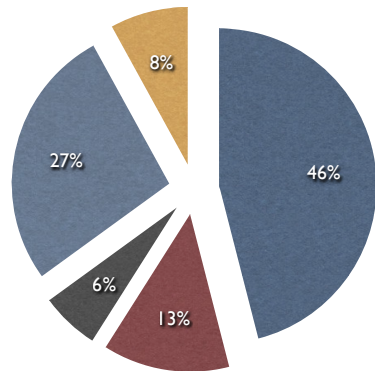
Consolidated Asset Allocation as at 30 June

- Australian Equities
- International Equities
- Property
- Fixed Income
- Alternative Investments
- Cash



MCF Investments

- Domestic Fixed Interest 23%
- International Fixed Interest 0%
- Cash & Equivalents 11%
- Options 0%
- Other 3%
- Australian Equities 42%
- International Equities 15%
- Domestic Listed Property 15%
- Domestic Direct Property 1%
- International Listed Property 0%



MCF Extension Fund Investments

- Australian Equities 46%
- International Equities 13%
- Domestic Direct Property 0%
- International Listed Property 0%
- Domestic Listed Property 6%
- International Direct Property 0%
- Domestic Fixed Interest 27%
- International Fixed Interest 0%
- Cash & Equivalents 8%
- Options 0%
- Others 0%

MCF - Extension Fund		
ASX Code	Name	Value %
BHP	BHP BILLITON LTD	6.29%
WDC	WESTFIELD GROUP - STAPLED SECURITIES ORDINARY	4.28%
WBC	WESTPAC BANKING CORPORATION	3.39%
NAB	NATIONAL AUSTRALIA BANK LTD	3.25%
RIO	RIO TINTO LTD	2.53%
ANZ	ANZ BANKING GROUP LTD	2.24%
QBE	QBE INSURANCE GROUP LTD	1.98%
CPU	COMPUTERSHARE LTD	1.91%
NWSLV	NEWS CORPORATION INC PREFERRED	1.82%
STO	SANTOS LIMITED	1.50%

Melbourne Community Foundation		
ASX Code	Name	Value %
BHP	BHP BILLITON LTD	5.98%
NAB	NATIONAL AUSTRALIA BANK LTD	3.19%
WBC	WESTPAC BANKING CORPORATION	2.92%
CBA	COMMONWEALTH BANK OF AUSTRALIA	2.23%
QBE	QBE INSURANCE GROUP LTD	2.18%
NWSLV	NEWS CORPORATION INC PREFERRED	2.01%
CPU	COMPUTERSHARE LTD	1.87%
ANZ	ANZ BANKING GROUP LTD	1.83%
RIO	RIO TINTO LTD	1.79%
WDC	WESTFIELD GROUP - STAPLED SECURITIES ORDINARY	1.72%

Audit and Risk Committee, and Finance and Investment Committee

MCF has a Finance and Investment Committee and a separate Audit and Risk Committee, which are responsible for assisting the Board with risk management and compliance issues, as well as with due care and diligence in relation to all financial aspects of the Foundation.

Audit and Accounts

MCF complies with all applicable Australian Accounting Standards and guidelines, as well as relevant Corporations Law provisions. The financial statements are audited by KPMG. These statements are available upon request from the Melbourne Community Foundation and its website www.communityfoundation.org.au

Melbourne Community Foundation accounts as at 1 July 2010 will comply with the recommended Australian NPF Chart of Accounts.

Distributions

During the financial year 2009-10 a total of \$2,943,421 was distributed to charitable organisations and projects. The total amount distributed since MCF was established is \$15,233,665.

Melbourne Community Foundation

ABRIDGED FINANCIAL STATEMENTS

BALANCE SHEET AT 30 JUNE 2010

	2010	2009
	\$	\$
Accumulated Funds		
Settled sum	200	200
Community Funds	29,161,684	27,228,021
Administration Fund	142,587	197,672
	29,304,471	27,425,893
Represented by:		
CURRENT ASSETS		
Cash and cash equivalents	3,292,248	10,855,212
Receivables	409,309	910,797
	3,701,557	11,766,009
NON CURRENT ASSETS		
Investments	26,216,308	15,767,816
Plant and equipment	31,095	31,680
	26,247,403	15,799,496
TOTAL ASSETS	29,948,960	27,565,505
CURRENT LIABILITIES		
Payables	(644,489)	(139,612)
NET ASSETS	29,304,471	27,425,893

Melbourne Community Foundation

ABRIDGED FINANCIAL STATEMENTS

INCOME STATEMENT FOR THE YEAR ENDED 30 JUNE 2010

	2010	2009
	\$	\$
COMMUNITY FUNDS		
REVENUE		
Donations	3,615,656	3,590,874
Investment income	1,167,284	1,674,353
Net realised loss on sale of investments	(825,174)	(6,371,134)
Net changes in fair value of investments	1,125,467	609,577
	5,083,233	(496,330)
EXPENSES		
Administration, fees and costs	(519,503)	(429,301)
SURPLUS/(DEFICIT) FROM OPERATING ACTIVITIES	4,563,730	(925,631)
Distributions paid	(2,630,067)	(2,293,469)
SURPLUS/(DEFICIT) FOR THE YEAR	1,933,663	(3,219,100)
Community Funds at the beginning of the year	27,228,021	30,447,121
COMMUNITY FUNDS AT BALANCE DATE	29,161,684	27,228,021
ADMINISTRATION FUND		
REVENUE		
Donations	136,761	123,676
Administration fee income	423,251	370,103
Investment income	5,270	6,396
Consulting fees	145,470	160,630
Other income	21,466	82,648
	732,218	743,453
EXPENSES		
Salary and office costs	(787,303)	(752,710)
(DEFICIT) FOR THE YEAR	(55,085)	(9,257)
Administration Fund at the beginning of the year	197,672	206,929
ADMINISTRATION FUND AT BALANCE DATE	147,587	197,672

Melbourne Community Foundation Extension Fund

ABRIDGED FINANCIAL STATEMENTS

BALANCE SHEET AT 30 JUNE 2010

	2010	2009
	\$	\$
Accumulated Funds		
Settled sum	200	200
Community Funds	2,034,041	1,539,508
	2,034,241	1,539,708
Represented by:		
CURRENT ASSETS		
Cash and cash equivalents	173,382	592,869
Receivables	14,926	83,714
	188,308	676,583
NON CURRENT ASSETS		
Investments	1,847,140	867,733
TOTAL ASSETS	2,035,448	1,544,316
CURRENT LIABILITIES		
Payables	(1,207)	(4,608)
NET ASSETS	2,034,241	1,539,708

INCOME STATEMENT FOR THE YEAR ENDED 30 JUNE 2010

	2010	2009
	\$	\$
COMMUNITY FUNDS		
REVENUE		
Donations	594,586	578,777
Investment income	72,226	72,949
Net realised profit/(loss) on sale of investments	30,986	(69,397)
Net changes in fair value of investments	(13,392)	43,153
	684,406	625,482
EXPENSES		
Administration, fees and costs	(39,123)	(17,501)
SURPLUS FROM OPERATING ACTIVITIES	645,283	607,981
Distributions paid	(150,750)	(100,583)
SURPLUS FOR THE YEAR	494,533	507,398
Community Funds at the beginning of the year	1,539,508	1,032,110
COMMUNITY FUNDS AT BALANCE DATE	2,034,041	1,539,508

Melbourne Community Foundation Scholarship Fund

ABRIDGED FINANCIAL STATEMENTS

BALANCE SHEET AT 30 JUNE 2010

	2010	2009
	\$	\$
Accumulated Funds		
Settled sum	100	100
Community Funds	231,062	199,965
	231,162	200,065
Represented by:		
CURRENT ASSETS		
Cash and cash equivalents	23,483	84,551
Receivables	2,042	3,676
	25,525	88,227
NON CURRENT ASSETS		
Investments	205,644	112,710
TOTAL ASSETS	231,169	200,937
CURRENT LIABILITIES		
Payables	(7)	(872)
NET ASSETS	231,162	200,065

INCOME STATEMENT FOR THE YEAR ENDED 30 JUNE 2010

	2010	2009
	\$	\$
COMMUNITY FUNDS		
REVENUE		
Donations	20,100	26,338
Investment income	8,423	11,946
Net realised gain/(loss) on sale of investments	(33,878)	-
Net changes in fair value of investments	44,987	(22,254)
	39,632	16,030
EXPENSES		
Administration, fees and costs	(4,035)	(3,677)
SURPLUS FROM OPERATING ACTIVITIES	35,597	12,353
Distributions paid	(4,500)	(22,125)
SURPLUS FOR THE YEAR	31,097	(9,772)
Community Funds at the beginning of the year	199,965	209,737
COMMUNITY FUNDS AT BALANCE DATE	231,062	199,965

National Community Foundation Fund

ABRIDGED FINANCIAL STATEMENTS

BALANCE SHEET AT 30 JUNE 2010

	2010	2009
	\$	\$
Accumulated Funds		
Settled sum	100	100
Community Funds	226,091	150,008
	226,191	105,108
Represented by:		
CURRENT ASSETS		
Cash and cash equivalents	52,295	150,022
Receivables	708	624
	53,003	150,646
NON CURRENT ASSETS		
Investments	173,445	-
TOTAL ASSETS	226,448	150,646
CURRENT LIABILITIES		
Payables	(25)	(538)
NET ASSETS	226,191	150,108

INCOME STATEMENT FOR THE YEAR ENDED 30 JUNE 2010

	2010	2009
	\$	\$
COMMUNITY FUNDS		
REVENUE		
Donations	237,805	197,911
Investment income	4,122	7,549
Net realised loss on sale of investments	(2,306)	-
Net changes in fair value of investments	(1,517)	-
	238,104	205,460
EXPENSES		
Administration, fees and costs	(3,917)	(2,862)
SURPLUS/(DEFICIT) FROM OPERATING ACTIVITIES	234,187	202,598
Distributions paid	(158,104)	(157,765)
SURPLUS FOR THE YEAR	76,083	44,833
Community Funds at the beginning of the year	150,008	105,175
COMMUNITY FUNDS AT BALANCE DATE	226,091	150,008

National Community Foundation Extension Fund

ABRIDGED FINANCIAL STATEMENTS

BALANCE SHEET AT 30 JUNE 2010

	2010	2009
	\$	\$
Accumulated Funds		
Settled sum	100	100
Community Funds	1,030	-
	1,130	100
Represented by:		
CURRENT ASSETS		
Cash and cash equivalents	1,130	100
	1,130	100
NON CURRENT ASSETS		
TOTAL ASSETS	1,130	100
NET ASSETS	1,130	100

INCOME STATEMENT FOR THE YEAR ENDED 30 JUNE 2010

	2010	2009
	\$	\$
COMMUNITY FUNDS		
REVENUE		
Donations	1,035	-
EXPENSES		
Administration, fees and costs	(5)	-
SURPLUS FROM OPERATING ACTIVITIES	1,030	-
SURPLUS FOR THE YEAR	1,030	-
Community Funds at the beginning of the year	-	-
COMMUNITY FUNDS AT BALANCE DATE	1,030	-

Thanks

Melbourne Community Foundation would like to thank the following people and organisations who gave generously of their time and resources throughout the period of this Annual Report.

Freehills, Holding Redlich, KPMG, Pro Bono Australia, Richard Beveridge – Research Advisory, Liz Grant – What Your Customers Want, Swinburne University of Technology Faculty of Design, ACSI Voting Services and Nicola Archer – Nicola Archer Communications.



Melbourne Community Foundation
ABN 57 967 620 066

Suite 6, 19-35 Gertrude Street Fitzroy Vic 3065
Tel: 03 9412 0412 Fax: 03 9415 7429

Website: communityfoundation.org.au Email: mcf@communityfoundation.org.au