

How it works

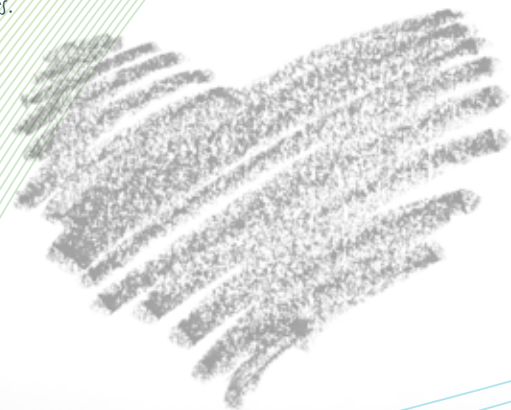
Invest for your cause and see your giving grow

Australian Communities Foundation is an independent not-for-profit charitable foundation. Established in 1997 as Melbourne Community Foundation, it is Australia's premier community foundation. Australian Communities Foundation enables donors to make donations to create a philanthropic fund and create a permanent endowment that will benefit the community. Using its grantmaking expertise and in-depth knowledge of community issues, Australian Communities Foundation assists donors make effective grants to the causes and issues they care about.

All donations to Australian Communities Foundation are pooled and invested and the income generated helps build social capital and supports charitable projects and organisations nationally and internationally.

There is no establishment fee or additional audit or compliance costs. Australian Communities Foundation charges an administration fee on capital and our investment manager charges a low competitive fee. More details of charges are available on the website.

Community foundations provide a way for people from all walks of life to act on that basic human charitable impulse, the willingness to help others.



Contact Australian Communities Foundation



Suite 6, 19-35 Gertrude Street
Fitzroy Victoria 3065

Phone: +613 9412 0412

Fax: +613 9415 7429

Email: admin@communityfoundation.org.au

Web: www.communityfoundation.org.au



Whatever your
PASSION

Australian Communities Foundation
can help you make
a real difference.

About Australian Communities Foundation

Australian Communities Foundation helps people from all walks of life to establish charitable funds to support the causes and organisations they care about.

We help you to be strategic about your giving by working with you to get the best outcome for the cause you support.

You can focus on the giving and we take care of the administration.

We help you plan and build a perpetual source of giving.

Australian Communities Foundation has a broad network and breadth of experience, so opportunities could be brought to my attention that I may never have thought of and I could also make small contributions to big projects and make a difference. Judy Stanton



Our products and services are effective and flexible

Sub-funds

You can establish a sub-fund with \$20,000. The sub-fund can be named for a cause or after a donor. Sub-funds can be established in any of the trust funds operated and managed by Australian Communities Foundation. These include tax deductible, non tax deductible or a specific tax deductible fund for educational scholarships.

Gumnut accounts

A Gumnut Account is a philanthropic savings account that requires an annual \$2,000 minimum contribution. The money is reinvested to increase the value of the account. It matures when the balance reaches \$20,000 and is then used for causes you wish to support.

Supporting foundations

Supporting foundations can be started with a minimum of \$1 million. A separate trust fund is established with its own objectives and investment asset allocation. Donors are not the Trustee but can be involved with the establishment of the Trust Deed and investment.

Corporate sub-funds

Australian Communities Foundation partners with corporate to implement their community investment programs. Organisations can establish charitable sub-funds and engage their employees in a workplace giving program where staff donations are contributed pre-tax.

Bequests

Donors can leave a bequest in their Will to their own or another existing sub-fund, to the Australian Communities Foundation Community Fund or to create a sub-fund. Australian Communities Foundation will look after your interests. Your gift will be professionally managed and will continue to give for ever.

Donations

Tax deductible donations can be made to Australian Communities Foundation. Donations will assist us in our capacity building and development and to support community initiatives.



Consulting advice

Using our extensive grantmaking expertise and experience, we offer advice and support to other foundations, including private funds.

The benefits

- Strong governance and operational efficiency – your gift will be responsibly and ethically managed
- Expert advice and ongoing support to assist you implement your personal giving plan
- Due diligence to ensure all grants from your sub-fund are fully compliant and meet relevant regulations and standards
- Clear and simple processes to establish a perpetual source of giving
- Ongoing support and guidance to ensure your gift makes an impact
- Cost effective – no establishment fees and a low, ongoing administration fee
- Flexibility – a range of products and you can choose your level of involvement